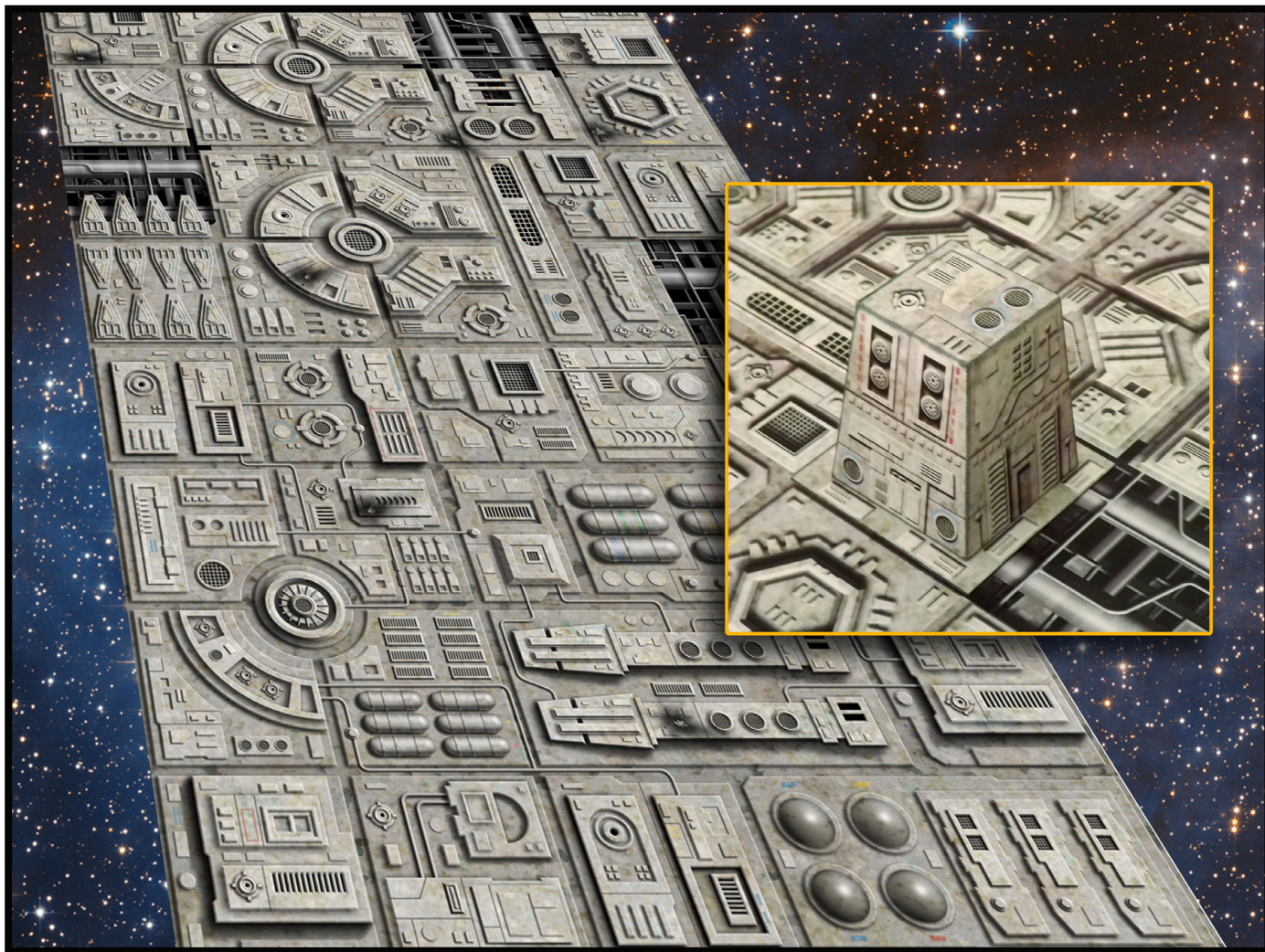


E-Z BATTLEFIELDS

F A T D R A G O N G A M E S

STARSHIP ATTACK



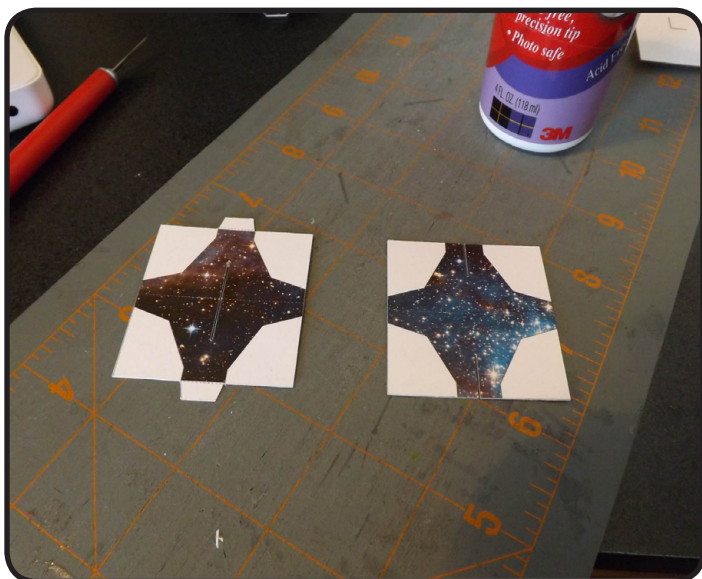
Before proceeding with this document, make sure you have read the beginners guide to card modeling included with this model set!

Most pages have user selectable options for the graphics which you can adjust prior to printing. Please see the section on 'DRAGON LAYERS' in the Beginners Guide for more info.

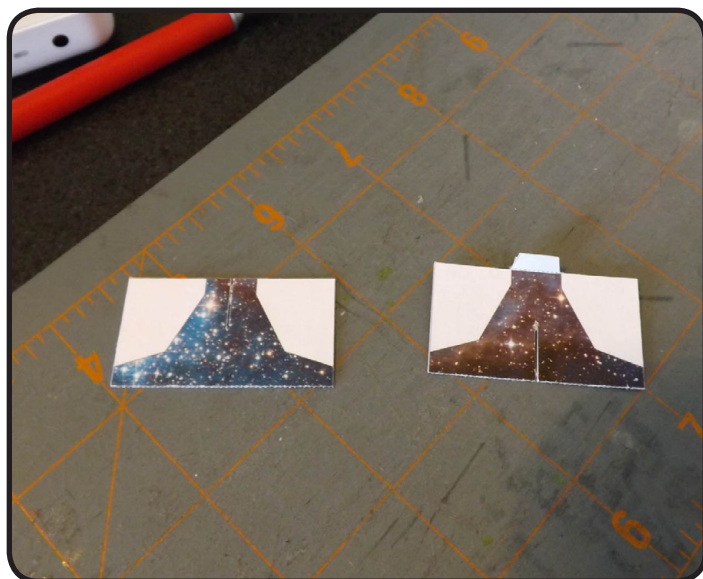
E-Z BATTLERFIELDS

F A T D R A G O N G A M E S

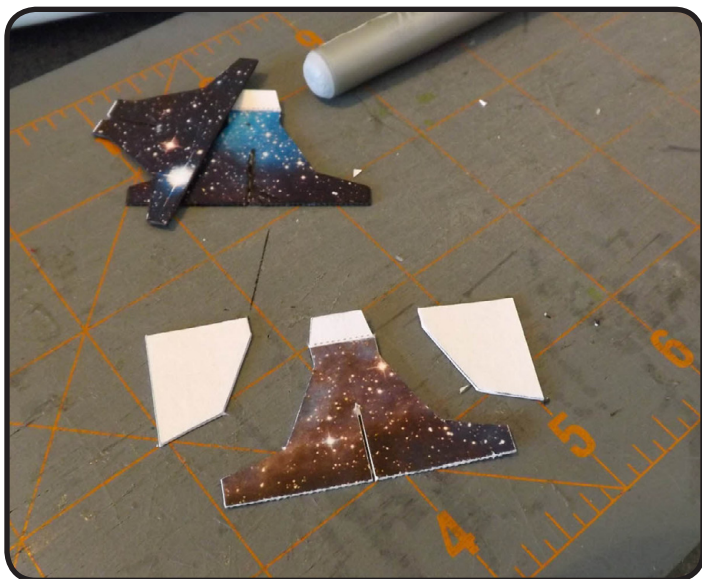
Asteroids



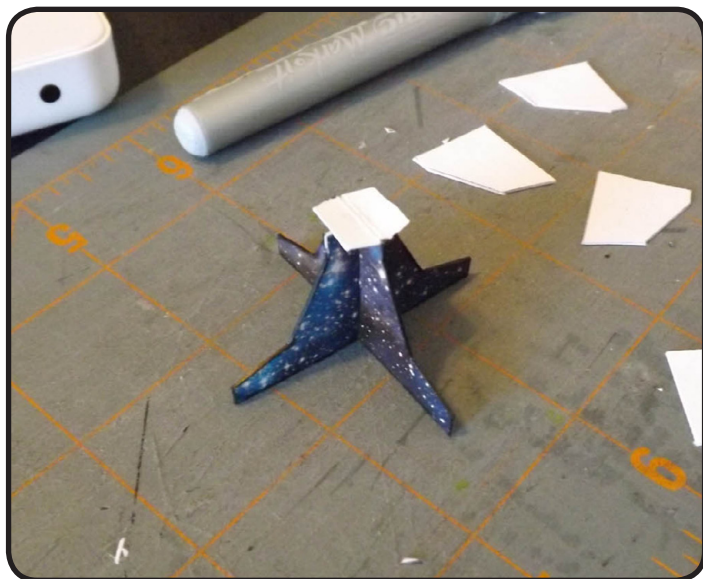
1: Cut out and score the asteroid stands as depicted above (including leaving the white areas.)



2: Fold in half and glue, allowing to fully dry before proceeding. Make sure you do not glue the two small tabs together at the top of the piece shown on the right.



3: Cut away the excess white areas.



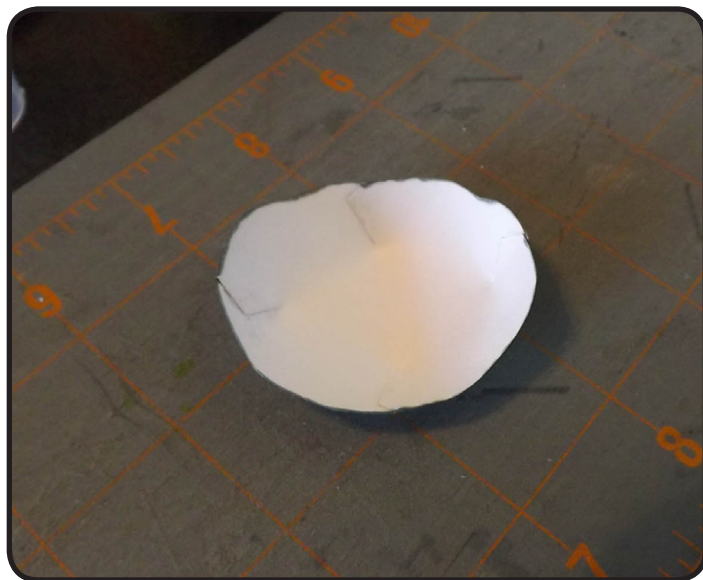
4: Fit the two pieces together sliding the two slots together (no glue is necessary.)

E-Z BATTLEFIELDS

F A T D R A G O N G A M E S



5: Cut out the asteroid (no scoring on the tabs is necessary.)



6: Glue the tabs as shown, forcing the asteroid into a semi-hemispherical shape. The amount of curvature is adjustable depending on how much you overlap the glue tabs.



7: The finished stand and asteroid.

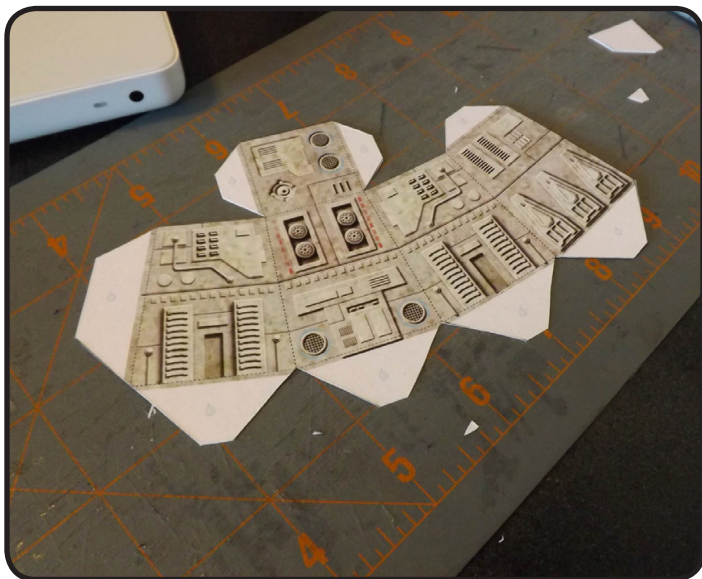


8: Glue the stand to the asteroid as shown.

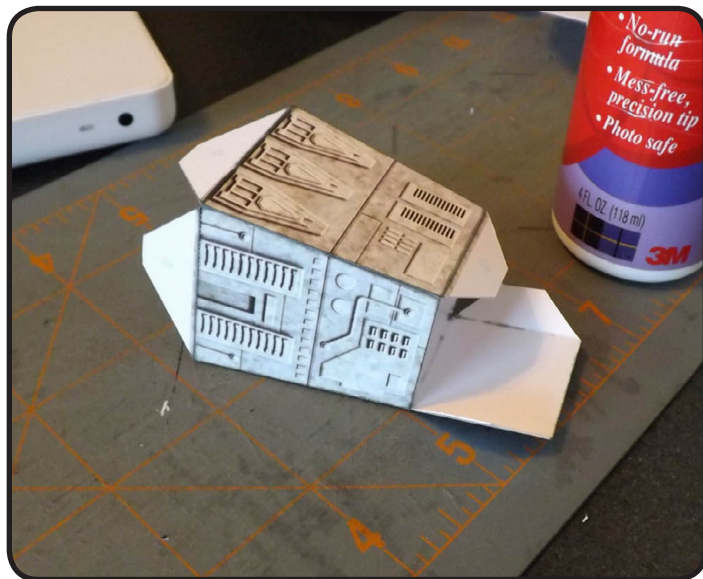
E-Z BATTLFIELDS

F A T D R A G O N G A M E S

Turret



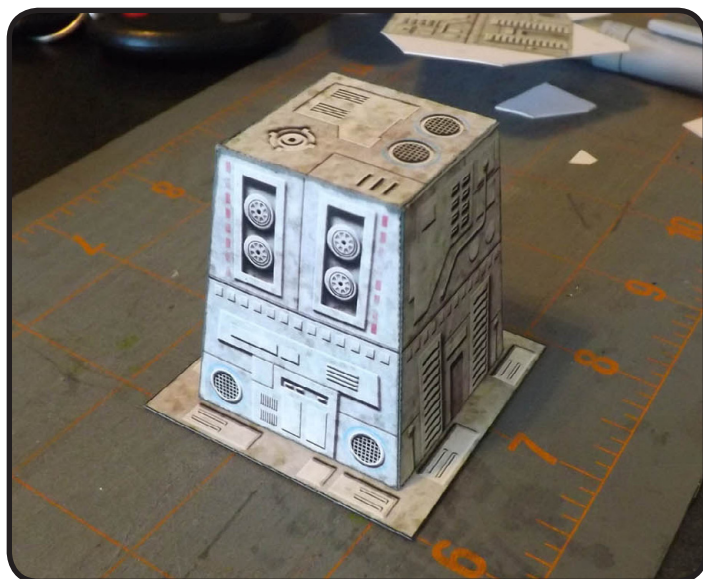
3: Cut, score and test fold the turret model. You may also wish to edge the model at this time with a gray marker.



2: Glue the long seam on the side first.



3: Cut out the base.



4: Glue the top flap of the turret and allow to dry. To finish, glue the turret to the base.